

# Oakebella

## House & Land Packages



*Image for illustration purposes only*

From \$419,522

Land Size: 377 m<sup>2</sup>

Frontage: 15 m

Lot 141 Lattuga Drive



4



2



2

**For more information please contact:**

Rob Skipworth 0418 958 959 or

roberts@perceptions.com.au

### Just some of Your Standard Inclusions

- Smeg 900mm wide Oven and Hotplate.
- Essa Stone bench tops thru out.
- Caroma Quatro Tapware and Accessories.
- Caroma Carboni Seamless inset Basins.
- Caroma clean flush Luna Wall faced Toilet Suites.
- Double Brick Construction.
- Free Interior Design Service.
- Free Building Design Service.
- Site inspection.
- Life Time Structural Guarantee.
- Quality Workmanship and Finishes.
- Exceptional Customer Service.

**What's your Ultimate Indulgence Promotion!!**

**Call Rob for more info on this Promotion.**

PERCEPTIONS 

**Sales Office Hours:**

1pm to 5pm Monday to Wednesday

1pm to 5pm Saturday & Sunday

1pm to 5pm Public holidays

**e** oakebella@lwpproperty.com.au

**a** Corner Bertram Road & Johnson Road, Wellard

**t** 08 9297 9977

**w** oakebella.com.au

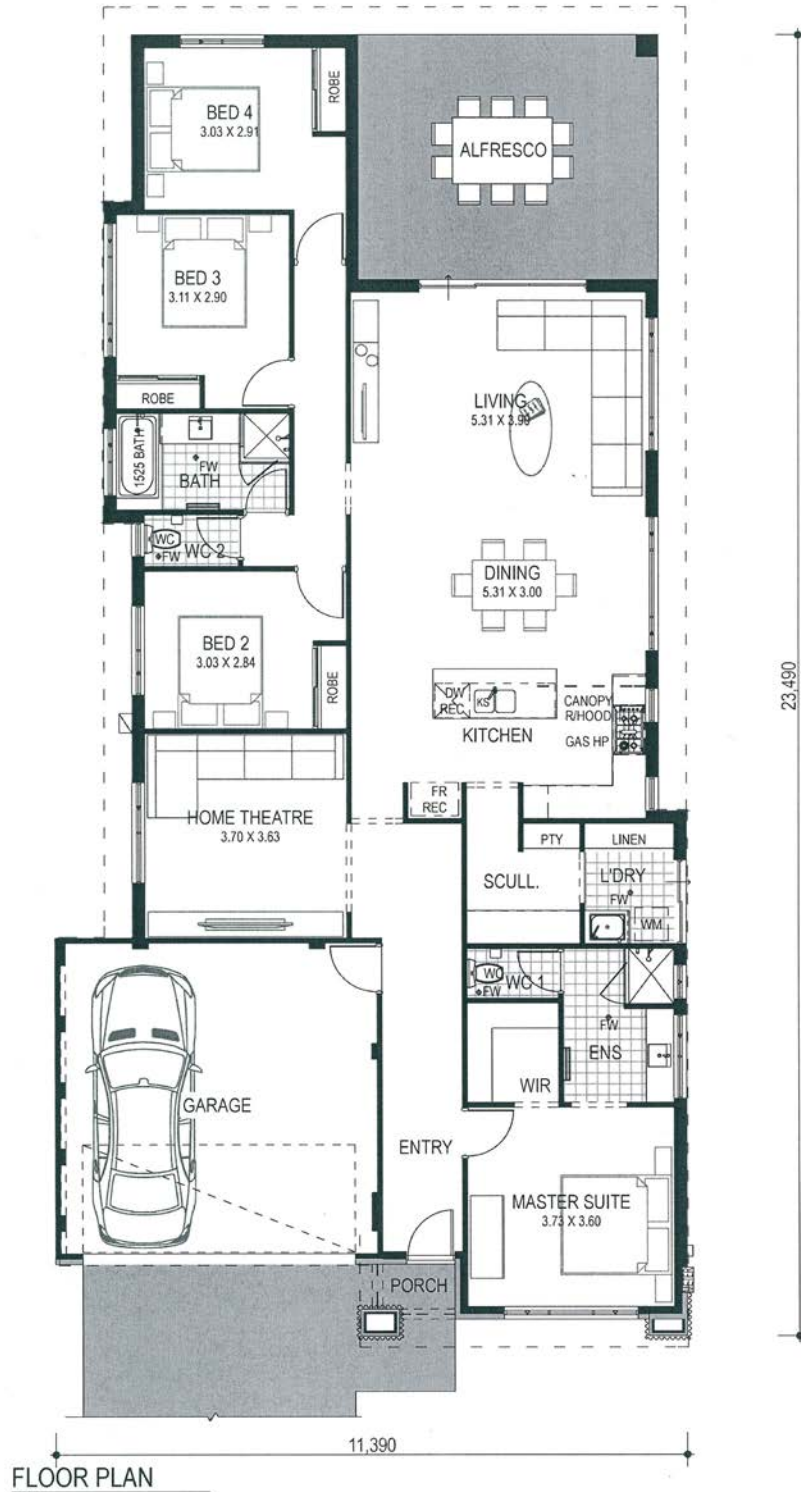
**LWP**   
**ADVANTAGE**

Join LWP Advantage today and enjoy exclusive benefits, priority notifications and great privileges.



# Oakebella

## House & Land Packages



**Sales Office Hours:**

1pm to 5pm Monday to Wednesday  
1pm to 5pm Saturday & Sunday  
1pm to 5pm Public holidays

**e** oakebella@lwpproperty.com.au  
**a** Corner Bertram Road & Johnson Road, Wellard  
**t** 08 9297 9977  
**w** oakebella.com.au

**LWP**  
**ADVANTAGE**

Join LWP Advantage today and enjoy exclusive benefits, priority notifications and great privileges.

