



GOLDEN BAY

\$553,360*

HOUSE & LAND PACKAGE



Image for illustrative purposes only.

*Prices are subject to change and availability.

The Sittella by Perceptions

 4  2  2

Home Size: 324.95sqm

PERCEPTIONS 

Lot 1693 Waylen Road (450sqm)

The Sittella is a showcase of light, space and zoned with an element of distinctive country charm with indoor and outdoor living areas to front & rear gardens.

HOUSE FEATURES

- Smeg 900mm wide Oven and Hotplate.
- Essa Stone bench tops through out.
- Caroma Quatro Tapware and Accessories.
- Caroma Clean Flush Luna Wall faced Toilet Suites.
- Double Brick Construction.
- Life Time Structural Guarantee.
- Quality Workmanship and Finishes.
- Luxury specification is our standard.
- Siteworks allowance of \$17,500 included

For further information please call

Renee Monteleone on 0438 387 449 or Rob Skipworth from Perceptions on 0418 958 958.

or visit our Sales and Information Centre at
4 Glenburgh Drive, Golden Bay

www.goldenbay.com.au

PEET



GOLDEN BAY

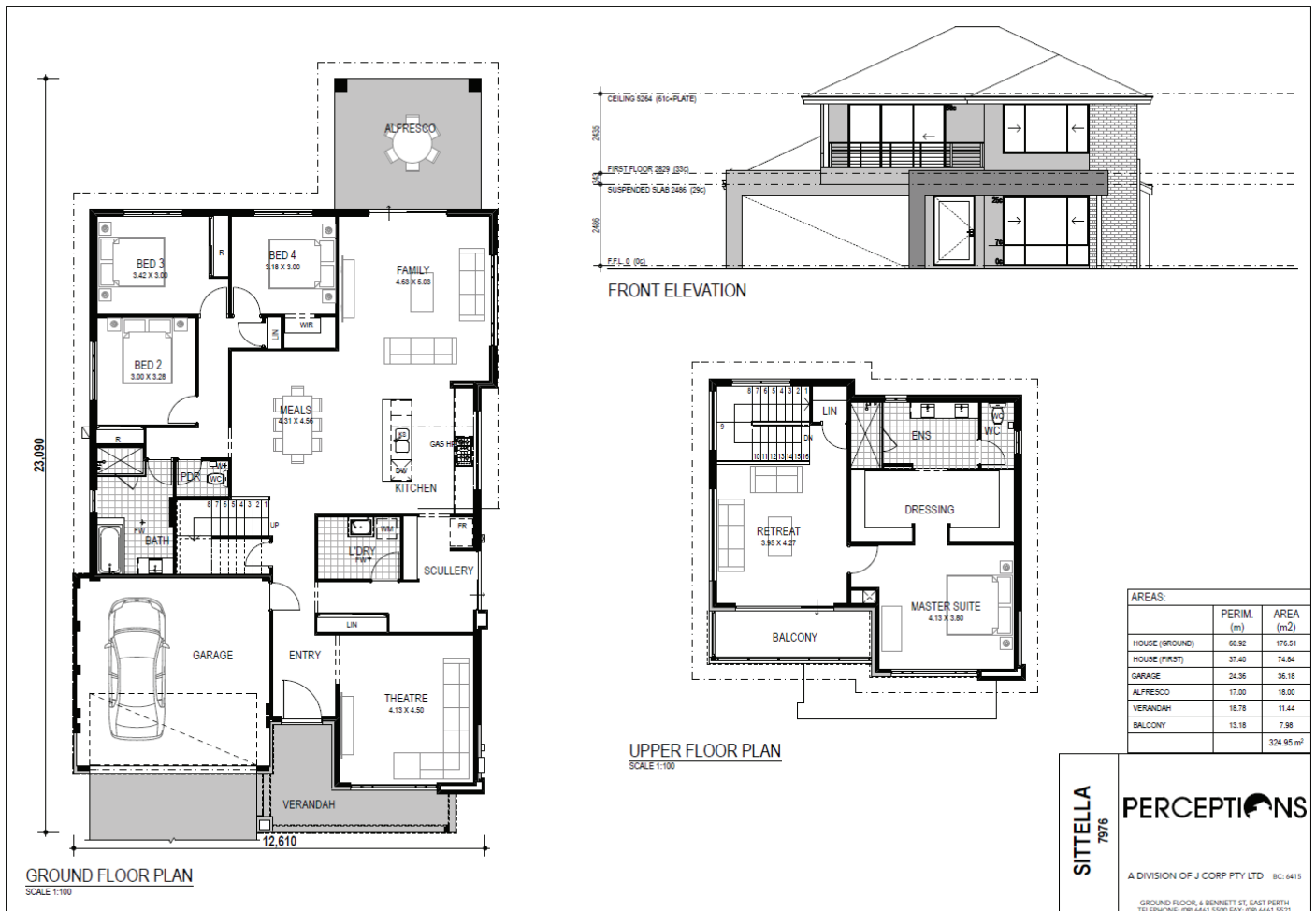
\$553,360*

HOUSE & LAND PACKAGE

The Sittella by Perceptions

Home Size: 324.95sqm

Lot Size: 450sqm



*House and land sold separately. The entity holding a real estate licence which has been appointed by Peet Limited ABN 56 008 665 834 or a subsidiary of it to sell land within the applicable State or Territory acts as agent for the sale of the land only. Buyers must enter into a separate contract with the builder, and the builder is responsible for all matters relating to the building contract and the house. Prices shown may include rebates for the fulfilment of separate conditions under the land contract, and information provided by the builder may be subject to eligibility criteria and other terms and conditions. Buyers should review each of the land and building contracts carefully and make their own enquiries. It is recommended that buyers obtain independent advice before proceeding. Illustrations and information are intended to be indicative only and are believed to be correct at the time of publication. Peet Limited ABN 56 008 665 834 reserves the right to withdraw or alter any package at any time without notice at its absolute discretion. Estimated costs for the package are indicative only and other costs and fees are payable, including but not limited to: transfer (also known as stamp) duty, settlement/registration fees, legal/conveyancing fees, finance costs, site works, engagement of any consultants, approvals, connection for services and variations. Prices and lot information correct as at 25/02/2019.

