



GOLDEN BAY

**\$408,088\***

**HOUSE & LAND PACKAGE**



\*Prices are subject to availability and change.

## The Vida by Perceptions



**Home Size: 231sqm**

PERCEPTIONS

### Lot 1695 Waylen Road (375sqm)

The Vida is a well zoned house designed for a young family in mind.

#### HOUSE FEATURES

- Smeg 900mm wide Oven and Hotplate.
- Essa Stone bench tops thru out.
- Caroma Quatro Tapware and Accessories.
- Caroma Clean Flush Luna Wall faced Toilet Suites.
- Double Brick Construction.
- Life Time Structural Guarantee.
- Quality Workmanship and Finishes.
- Luxury specification is our standard.
- Siteworks allowance of \$17,500 included

For further information please call

**Renee Monteleone on 0438 387 449 or Rob Skipworth from Perceptions on 0418 958 958.**

or visit our Sales and Information Centre at  
4 Glenburgh Drive, Golden Bay

[www.goldenbay.com.au](http://www.goldenbay.com.au)

**PEET**



GOLDEN BAY

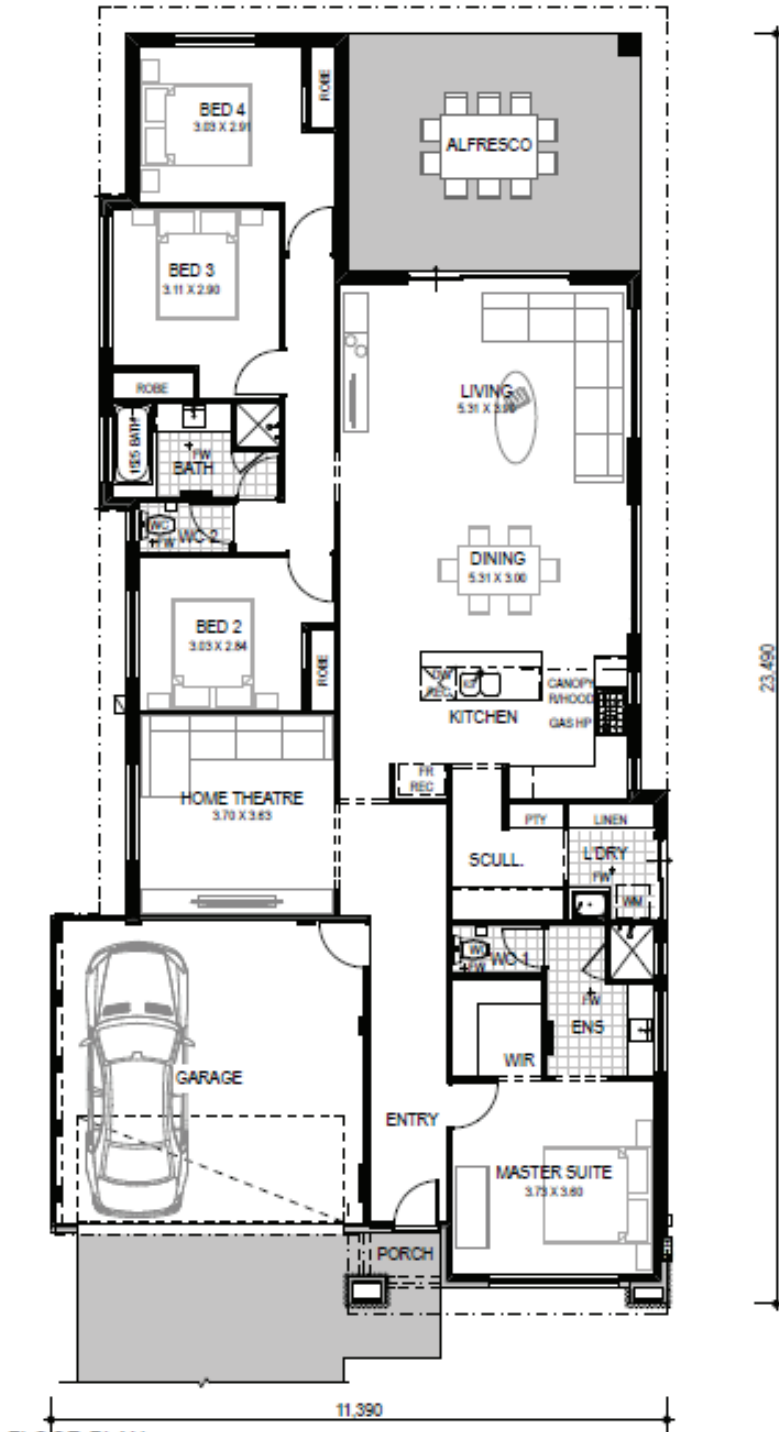
# \$408,088\*

## HOUSE & LAND PACKAGE

The Vida by Perceptions

Home Size: 231sqm

Lot Size: 375sqm



\*House and land sold separately. The entity holding a real estate licence which has been appointed by Peet Limited ABN 56 008 665 834 or a subsidiary of it to sell land within the applicable State or Territory acts as agent for the sale of the land only. Buyers must enter into a separate contract with the builder, and the builder is responsible for all matters relating to the building contract and the house. Prices shown may include rebates for the fulfilment of separate conditions under the land contract, and information provided by the builder may be subject to eligibility criteria and other terms and conditions. Buyers should review each of the land and building contracts carefully and make their own enquiries. It is recommended that buyers obtain independent advice before proceeding. Illustrations and information are intended to be indicative only and are believed to be correct at the time of publication. Peet Limited ABN 56 008 665 834 reserves the right to withdraw or alter any package at any time without notice at its absolute discretion. Estimated costs for the package are indicative only and other costs and fees are payable, including but not limited to: transfer (also known as stamp) duty, settlement/registration fees, legal/conveyancing fees, finance costs, site works, engagement of any consultants, approvals, connection for services and variations. Prices and lot information correct as at 14/03/2019.

